



The Millbrook Power (Gas Fired Power Station) Order

Land Plans (Revision 1) – Submitted at Deadline 5

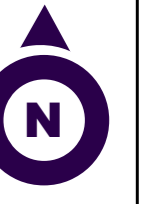
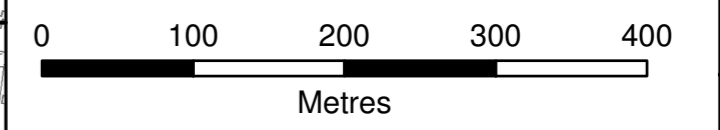
Planning Act 2008
The Infrastructure Planning
(Applications: Prescribed Forms and Procedure) Regulations 2009

PINS Reference Number: EN010068
Document Reference: 2.5
Regulation Number: Reg. 5(2)(i)
Author: Carter Jonas

Revision	Date	Description
1	July 2018	Examination Version



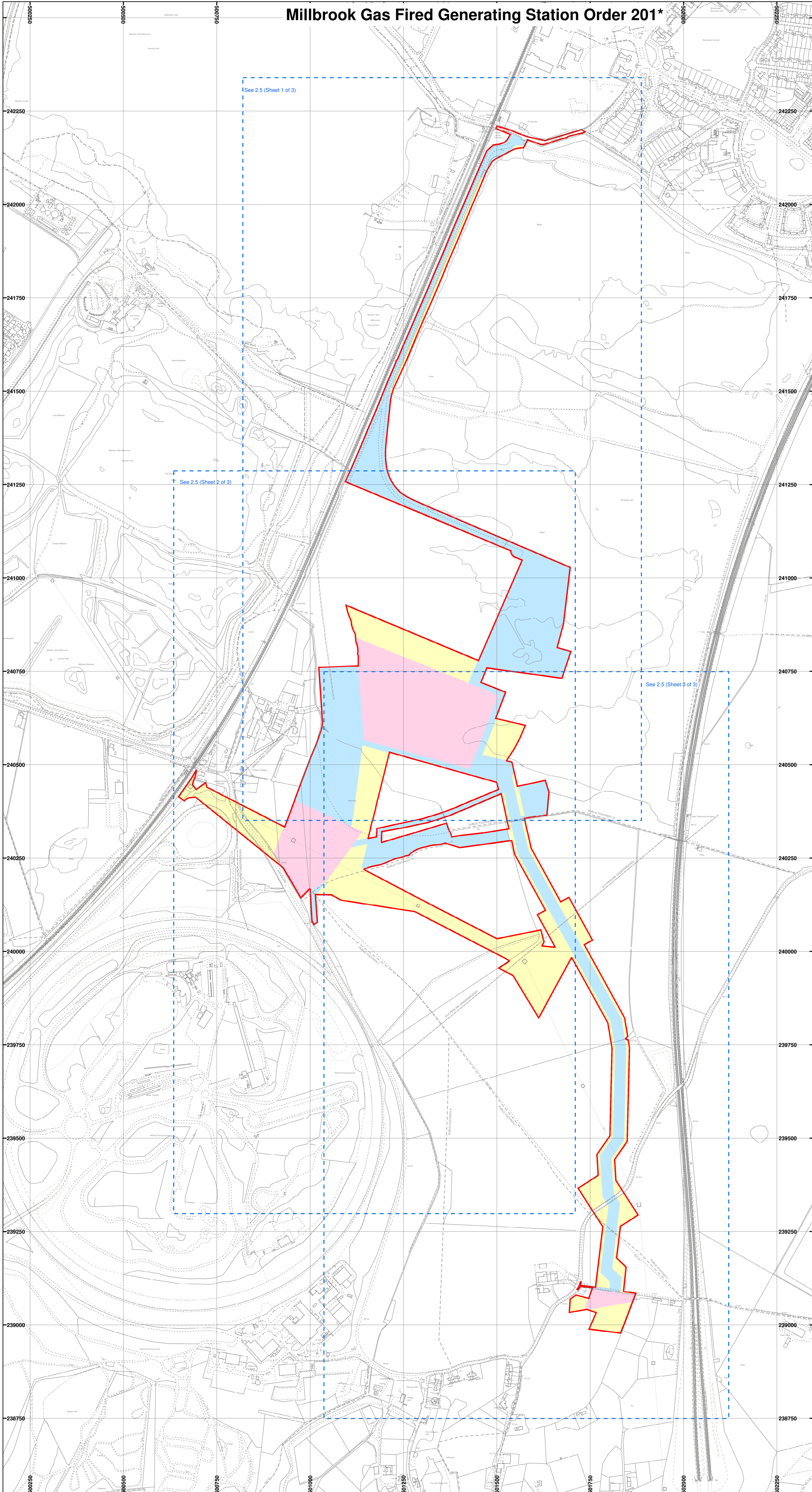
Millbrook Gas Fired Generating Station Order 201*



Reproduced from the Ordnance Survey Map with permission of the Controller of Her Majesty's Stationery Office. © Crown Copyright 2018. Carter Jonas LLP ES100004458

Legend:

- Order Limits
- Order Land - Freehold to be compulsorily acquired and in relation to which it is proposed to extinguish easements, servitudes and other private rights
- Order Land - Rights (including restrictions) to be compulsorily acquired and new rights to be created (including to be imposed) and in relation to which it is proposed to suspend or extinguish easements, servitudes and other private rights
- Order Land - Temporary use of land and in relation to which it is proposed to temporarily suspend easements, servitudes and other private rights
- Sheet edges



Created by:
Carter Jonas LLP
2 Snow Hill
Birmingham
B4 6GA

Carter Jonas

www.carterjonas.co.uk
millbrook@carterjonas.co.uk

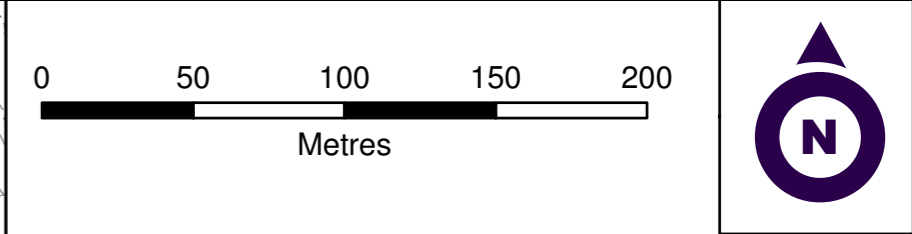
Created for:
Millbrook Power Limited
Drax Power Station
Drax, Selby
North Yorkshire
YO8 8PH



Title:
Land Plan Key Plan
The Infrastructure Planning (Applications: Prescribed Forms and Procedure) Regulations 2009
Regulation 5(2)(i) and 5(2)(n) Document Reference: 2.5

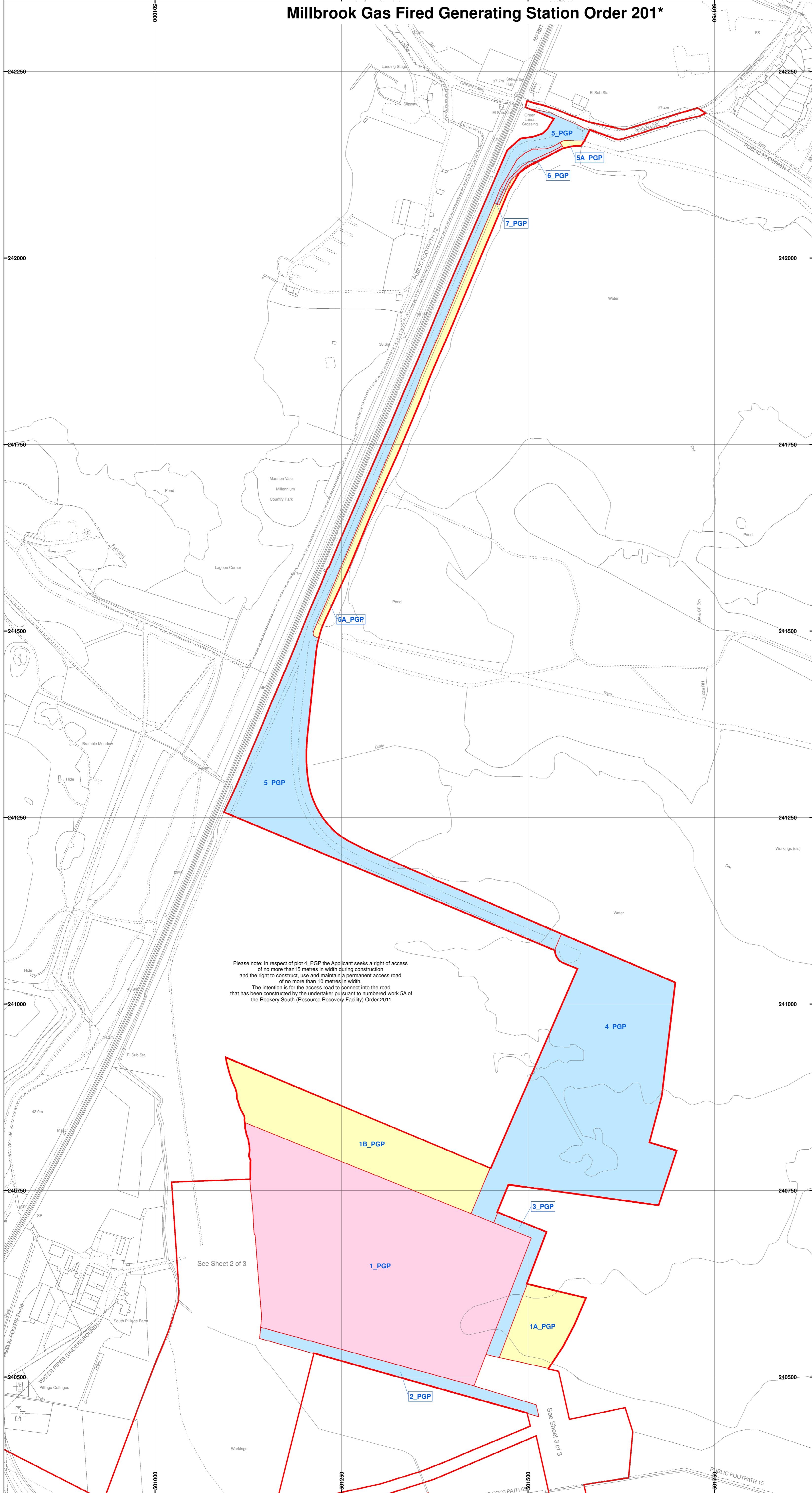
Scale: 1:5000 @A1	Date: 10 July 2018	
Dwg no: J0008128-100	Revision G	
Drawn by: RB	Checked by: MD	Approved by: MD

Millbrook Gas Fired Generating Station Order 201*



Reproduced from the Ordnance Survey Map with permission of the Controller of Her Majesty's Stationery Office. © Crown Copyright 2018. Carter Jonas LLP ES100004458

- Legend:**
- Order Limits
 - Order Land - Freehold to be compulsorily acquired and in relation to which it is proposed to extinguish easements, servitudes and other private rights
 - Order Land - Rights (including restrictions) to be compulsorily acquired and new rights to be created (including to be imposed) and in relation to which it is proposed to suspend or extinguish easements, servitudes and other private rights
 - Order Land - Temporary use of land and in relation to which it is proposed to temporarily suspend easements, servitudes and other private rights



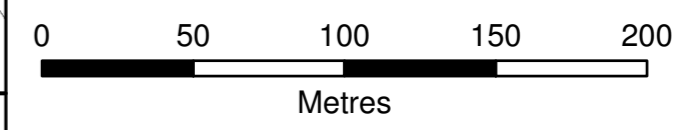
Please note: In respect of plot 4_PGP the Applicant seeks a right of access of no more than 15 metres in width during construction and the right to construct, use and maintain a permanent access road of no more than 10 metres in width. The intention is for the access road to connect into the road that has been constructed by the undertaker pursuant to numbered work 5A of the Rookery South (Resource Recovery Facility) Order 2011.

See Sheet 2 of 3

See Sheet 3 of 3

Created by: Carter Jonas LLP 2 Snow Hill Birmingham B4 6GA www.carterjonas.co.uk millbrook@carterjonas.co.uk		Carter Jonas	
Created for: Millbrook Power Limited Drax Power Station Drax, Selby North Yorkshire YO8 8PH www.millbrookpower.co.uk			
Title: Power Generation Plant Land Plan (Sheet 1 of 3) The Infrastructure Planning (Applications: Prescribed Forms and Procedure) Regulations 2009 Regulation 5(2)(i) and 5(2)(n) Document Reference: 2.5			
Scale: 1:2500	@A1	Date: 10 July 2018	
Dwg no: J0008128-101	Revision	G	
Drawn by: RB	Checked by: MD	Approved by: MD	

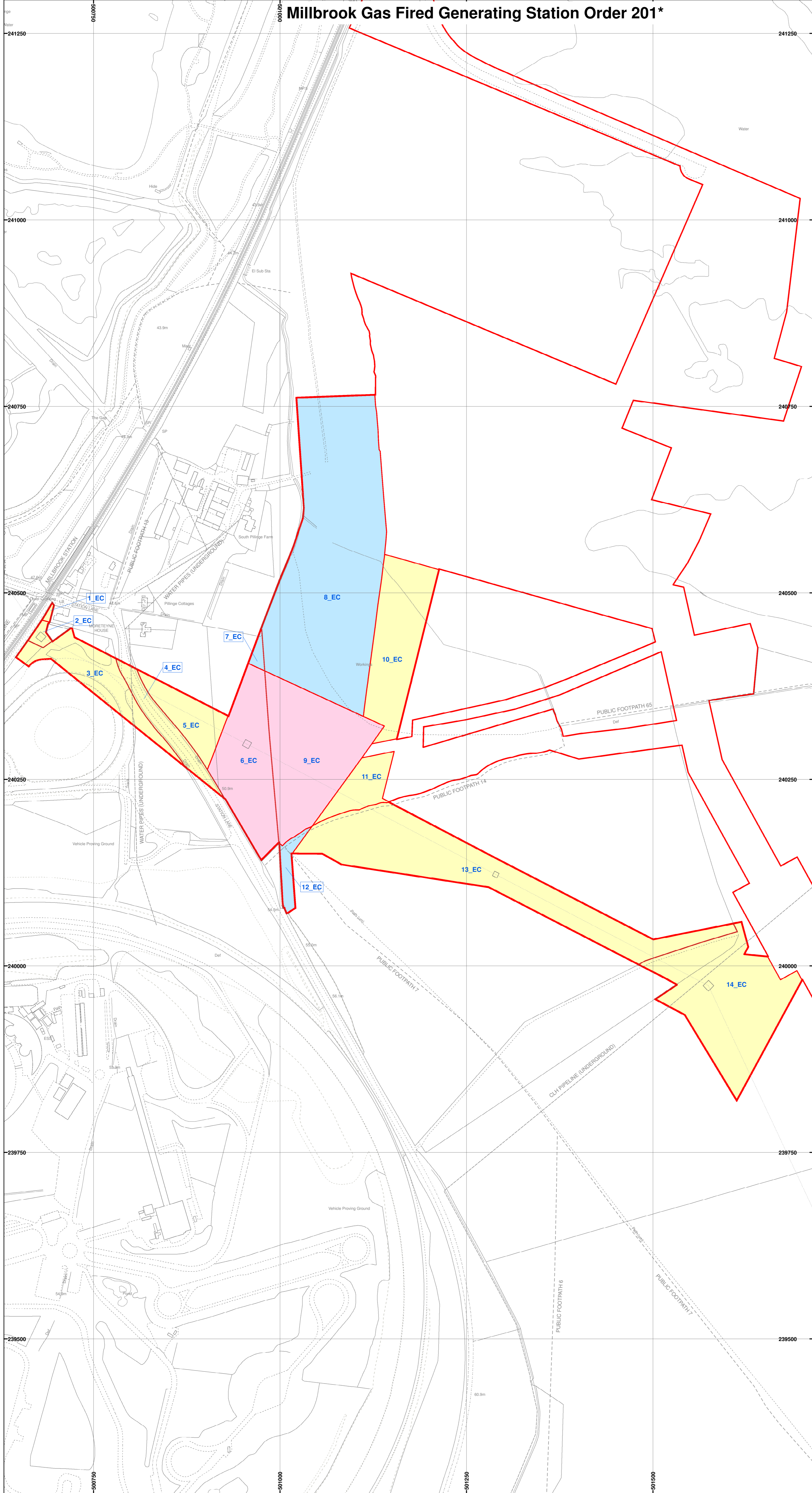
Millbrook Gas Fired Generating Station Order 201*



Reproduced from the Ordnance Survey Map with permission of the Controller of Her Majesty's Stationery Office. © Crown Copyright 2018. Carter Jonas LLP ES100004458

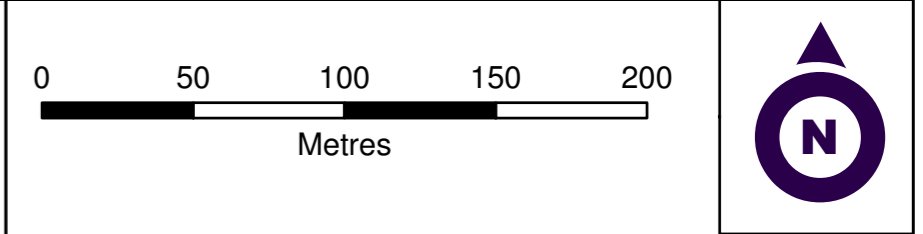
Legend:

- Order Limits
- Order Land - Freehold to be compulsorily acquired and in relation to which it is proposed to extinguish easements, servitudes and other private rights
- Order Land - Rights (including restrictions) to be compulsorily acquired and new rights to be created (including to be imposed) and in relation to which it is proposed to suspend or extinguish easements, servitudes and other private rights
- Order Land - Temporary use of land and in relation to which it is proposed to temporarily suspend easements, servitudes and other private rights



Created by: Carter Jonas LLP 2 Snow Hill Birmingham B4 6GA www.carterjonas.co.uk millbrook@carterjonas.co.uk		
Created for: Millbrook Power Limited Drax Power Station Drax, Selby North Yorkshire YO8 8PH www.millbrookpower.co.uk		
Title: Electrical Connection Land Plan (Sheet 2 of 3) The Infrastructure Planning (Applications: Prescribed Forms and Procedure) Regulations 2009 Regulation 5(2)(i) and 5(2)(n) Document Reference: 2.5		
Scale: 1:2500 @A1	Date: 10 July 2018	
Dwg no: J0008128-102	Revision G	
Drawn by: RB	Checked by: MD	Approved by: MD

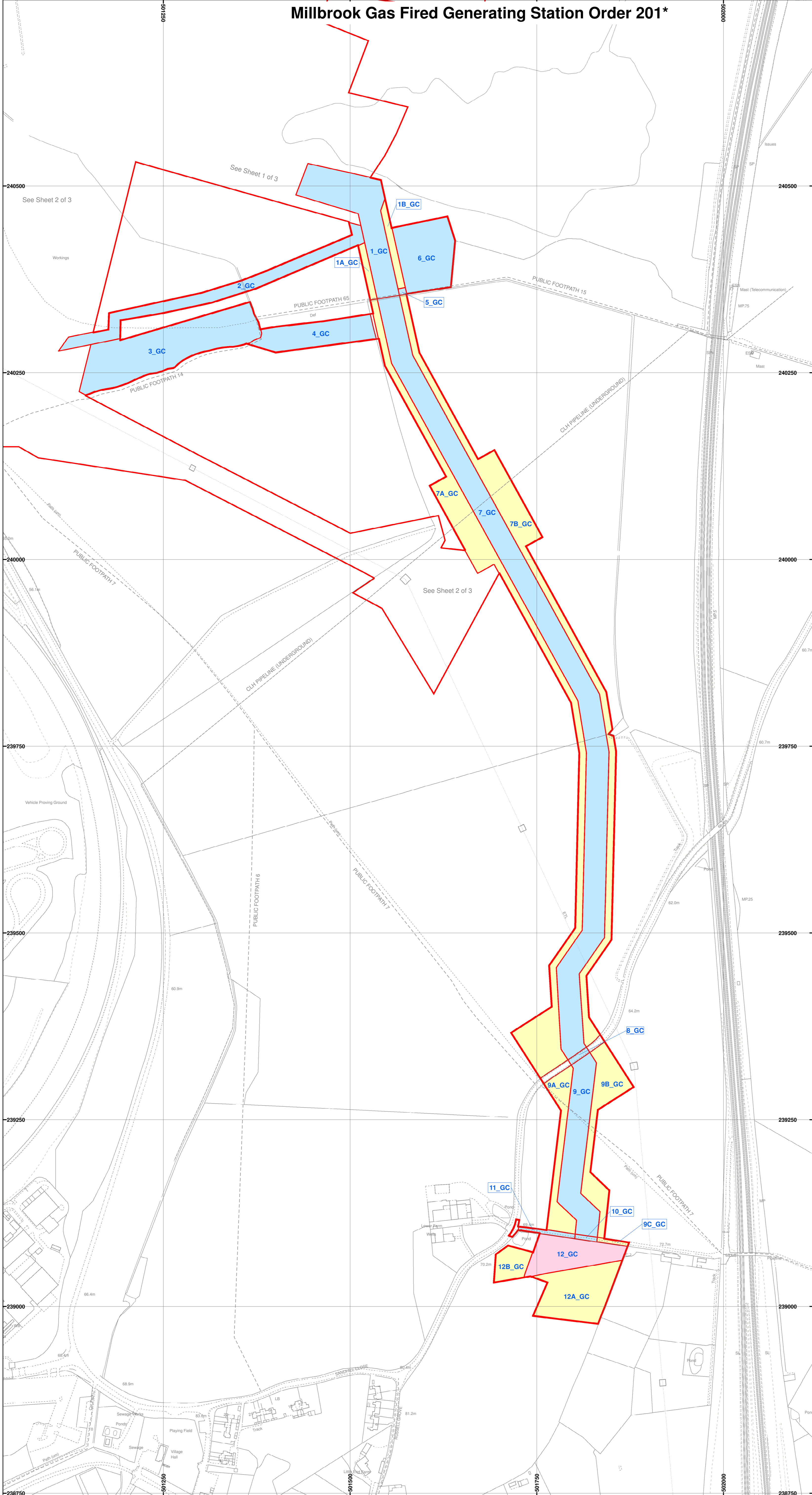
Millbrook Gas Fired Generating Station Order 201*



Reproduced from the Ordnance Survey Map with permission of the Controller of Her Majesty's Stationery Office. © Crown Copyright 2018. Carter Jonas LLP ES100004458

Legend:

- Order Limits
- Order Land - Freehold to be compulsorily acquired and in relation to which it is proposed to extinguish easements, servitudes and other private rights
- Order Land - Rights (including restrictions) to be compulsorily acquired and new rights to be created (including to be imposed) and in relation to which it is proposed to suspend or extinguish easements, servitudes and other private rights
- Order Land - Temporary use of land and in relation to which it is proposed to temporarily suspend easements, servitudes and other private rights



Created by: Carter Jonas LLP 2 Snow Hill Birmingham B4 6GA www.carterjonas.co.uk millbrook@carterjonas.co.uk		
Created for: Millbrook Power Limited Drax Power Station Drax, Selby North Yorkshire YO8 8PH www.millbrookpower.co.uk		
Title: Gas Connection Land Plan (Sheet 3 of 3) The Infrastructure Planning (Applications: Prescribed Forms and Procedure) Regulations 2009 Regulation 5(2)(i) and 5(2)(n)		
Scale: 1:2500 @A1		Document Reference: 2.5 Date: 10 July 2018
Dwg no: J0008128-103		Revision: G
Drawn by: RB	Checked by: MD	Approved by: MD